

WAFER, LUG & DOUBLE FLANGED

- Body construction
107 Wafer 2"-56"
116 Double flanged 12"-64"
115 Lug 2"-16"
- Face to face
ISO 5752 (series 20)/ API 609/ BS 5155
BS EN593/ EN-558-1/(series 20)
- Flanges
ISO 7005-2 PN 10/16 (EN 1092-2 PN 10/16)
ANSI B16.1 class 125/ B16.1 class 150
- Top flange
EN ISO 5211
- Max working pressure
PN 16
- Temperature range
-20°C + 140°C according to material
- Operation
Handwheel
Lever
Electric actuator
Pneumatic actuator
- Coating
Epoxy min 80 micron UV resistance
- Disc
Worthite/ Duplex/ Super Duplex/ SS 316/ UB6
Ductile Iron Enamel/ Halar/ Rilsan coated
Ductile Iron rubber vulcanized EPDM/ NBR
Hypalon/ Butyl
- Tightness test
According to EN 12266-1:2003
- Material certificate
EN 10204.3.1



MODEL 107



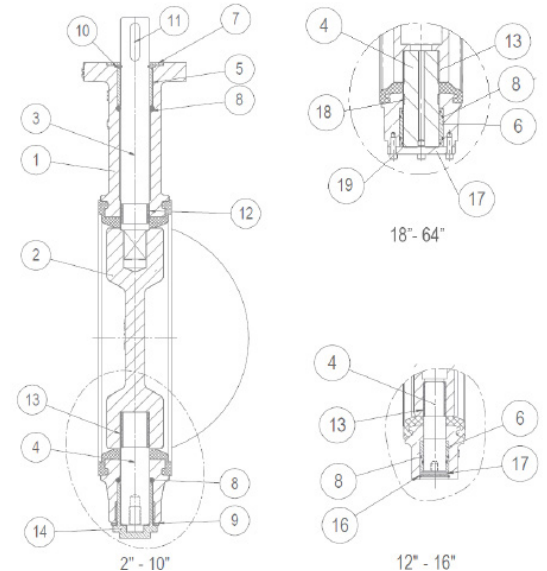
MODEL 116



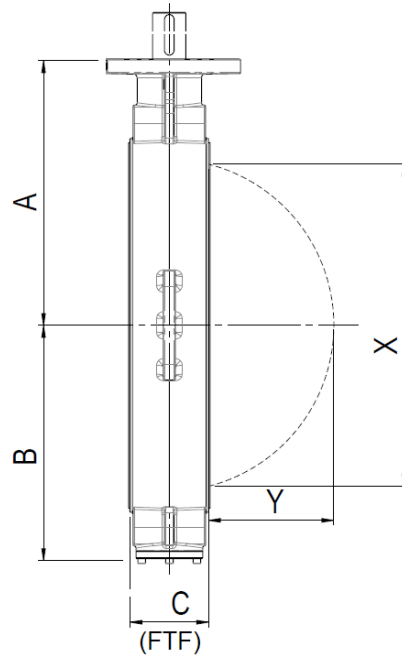
MODEL 115

Materials

Item	Description	Material
1	Body	Ductile Iron/ Cast Iron
	Seat (vulcanized)	EPDM/ NBR/ Butyl/ Hypalon
2	Disc	As specified above
3,4	Shaft/ Axle	SS420/ SS316/ Duplex
5,6,14,18	Bush	Brass/ Reinforced Nylon/ PP
7	Washer	Steel Galvanized
8	O-Ring	NBR/ EPDM
9	Sealing Ring	Fiber
10,16	Circlip	Spring Steel
11	Woodruff Key/ Rectangular Key	Steel
12,13	Bush	Reinforced Nylon
17	Retaining Ring	Steel
19	Screws	Carbon Steel Galvanized

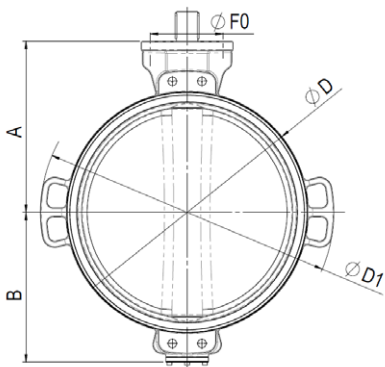


Dimensions

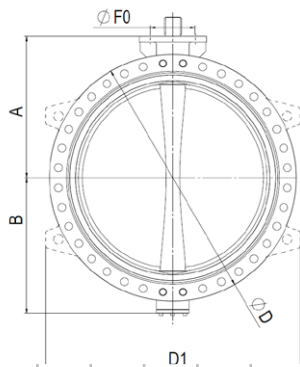


mm	50	65	80	100	125	150	200	250	300	350	400	450	500	600	700	750	800	900	1000	1100	1200	1300	1400
inch	2"	2.5"	3"	4"	5"	6"	8"	10"	12"	14"	16"	18"	20"	24"	28"	30"	32"	36"	40"	44"	48"	52"	56"
A	126	130	157	168	180	200	242	282	301.5	315	360.5	390	450	510	560	590	610	690	740	820	860	940	1000
B	79	86	101	110.5	125	145	176	222	243.5	259	295.5	342	367	426	490	525	550	615	710	770	860	930	985
C	43	46	46	52	56	56	60	68	78	78	102	114	127	152	165	190	190	203	216	240	254	254	279
X	37	53	71.5	90	116	141	188	244	293	327	370	425	474	574	675	720	767	840	966	1061	1144	1247	1356
Y	7	12.5	19.5	25.5	36	48	68.5	92.5	112.5	129	141	163	182	221	265	277.5	300	330.5	387	424	459	509.5	553.5

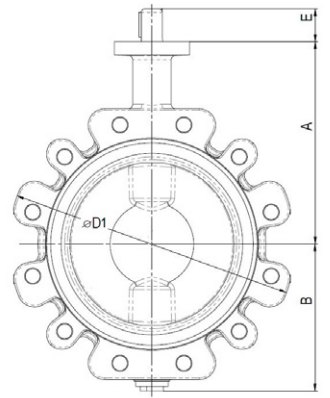
MODEL 107



MODEL 116



MODEL 115



	mm	50	65	80	100	125	150	200	250	300	350	400	450	500	600	700	750	800	900	1000	1050	1100	1200	1300	1400	1600	
	inch	2"	2.5"	3"	4"	5"	6"	8"	10"	12"	14"	16"	18"	20"	24"	28"	30"	32"	36"	40"	42"	44"	48"	52"	56"	64"	
107	D	102	119	142	162	192	216	272	333	381	438	490	534	591	704	788	850	904	987	1100	-	1210	1300	1462	1525	-	
	D1	-	-	-	-	-	-	-	-	-	-	-	-	-	-	960	1020	1080	-	1330	-	1430	1540	1665	1800	-	
116	D										460	520	580	640	715	840	925	985	1060	1175	1290	1345	1405	1510	1625	1745	1930
	D1										-	-	-	-	-	-	-	-	-	-	-	1350	1410	1550	1675	1785	1980
115	D	102	119	142	162	216			272	333	381	438	490														
	D1	160	180	195	230	285			342	406	482	530	595														