

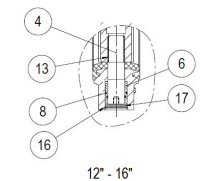
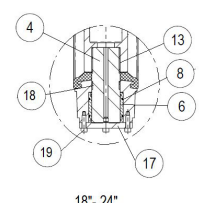
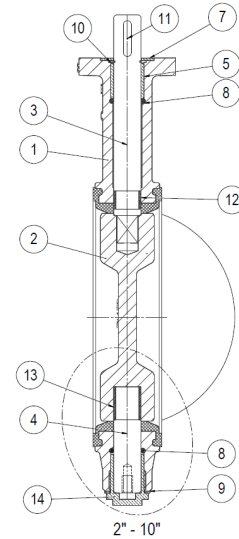
WAFFER PN 16 /PN 25

- Body construction 102 Wafer 3"-24"
- Suitable for pipe flanges ISO 7005-2 PN 10/16 (EN 1092-2 PN 10/16/25)
ANSI B16.1 class 125/ B16.1 class 150
- Top flange axle EN ISO 5211
- Working pressure PN 16/ PN 25
- Temperature range -20°C + 140°C according to material
- Operation Handwheel
Lever
Electric actuator
Pneumatic actuator
- Coating Epoxy min 80 micron UV resistance
- Disc *Worthite/ Duplex/ Super Duplex/ SS 316/ UB6
Ductile Iron Enamel/ Halar/ Rilsan coated
Ductile Iron rubber vulcanized EPDM/ NBR Hypalon/ Butyl
- Tightness test According to EN 12266-1:2003
- Material certificate EN 10204.3.1



Materials

| Item | Description | Material |
|-----------|-------------------------------|------------------------------------|
| 1 | Body (vulcanized) | Ductile Iron/ Cast Iron + EPDM/NBR |
| 2 | Disc | As specified above* |
| 3,4 | Shaft/ Axle | SS420/ SS316/ Duplex |
| 5,6,14,18 | Bush | Brass/ Reinforced Nylon/ PP |
| 7 | Washer | Galvanized Steel |
| 8 | O-Ring | NBR/ EPDM |
| 9 | Sealing Ring | Fiber |
| 10,16 | Circlip | Spring Steel |
| 11 | Woodruff Key/ Rectangular Key | Steel |
| 12,13 | Bush | Reinforced Nylon |
| 17 | Cover | Steel |
| 19 | Screws | Carbon Steel Galvanized |



Dimensions

| mm | 80 | 100 | 150 | 200 | 250 | 300 | 350 | 400 | 450 | 500 | 600 |
|------|---------|------|-------|-------|-----|-------|---------|-------|-----|-------|-------|
| inch | 3" | 4" | 6" | 8" | 10" | 12" | 14" | 16" | 18" | 20" | 24" |
| A | 127 | 148 | 173 | 206.5 | 231 | 276.5 | 329 | 374 | 397 | 425 | 493 |
| B | 107 | 121 | 164 | 203 | 208 | 234 | 309 | 385 | 408 | 435 | 505 |
| C | 56 | 58 | 92 | 92 | 93 | 106 | 111 | 125 | 140 | 140 | 152 |
| D | 127/142 | 160 | 217 | 274 | 330 | 382 | 422/445 | 490 | 549 | 595 | 704 |
| D1 | - | - | - | - | - | - | - | - | 657 | 704 | - |
| X | 64 | 84.5 | 121.6 | 176 | 235 | 284.5 | 318.7 | 362.8 | 419 | 465.5 | 571.5 |
| Y | 14.5 | 22.3 | 30.3 | 53.3 | 80 | 99 | 113.3 | 129.4 | 151 | 173 | 216 |

